



Pingüino de Humboldt
Spheniscus humboldti



Peuco
Parabuteo unicinctus



Garza grande
Ardea Alba



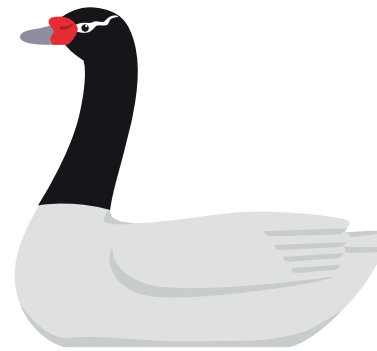
Picaflor chico
Sephanoides sephaniodes



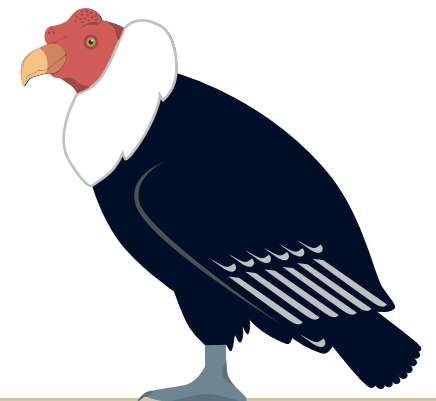
Chincol
*Zonotrichia
capensis chilensis*



Pelícano
Pelecanus thagus

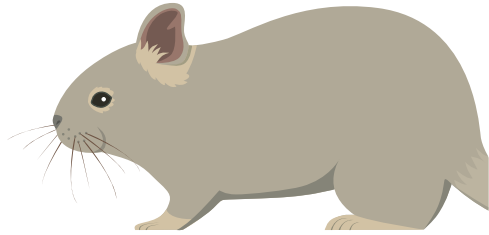


Cisne cuello negro
Cygnus melancoryphus

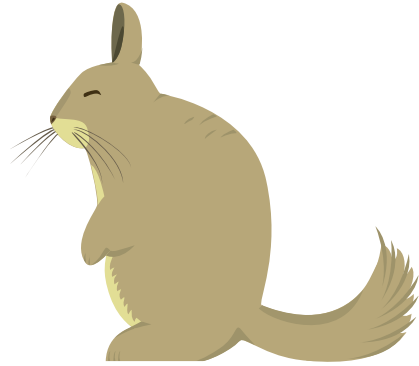


Cóndor
Vultur gryphus





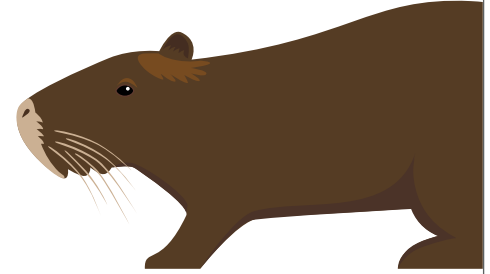
Degú
Octodon degus



Vizcacha
Lagidium viscacia



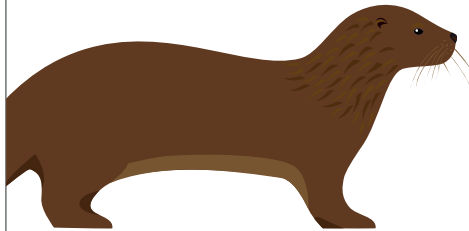
Yaca
Thylamys elegans



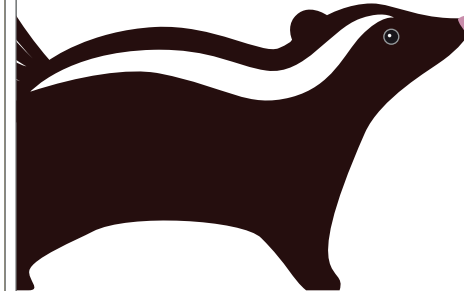
Coipo
Myocastor coypus



Gato andino
Leopardus jacobita



Chungungo
Lontra felina

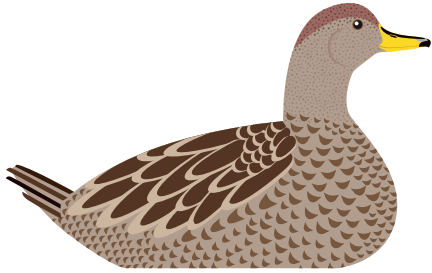


Chingue
Conepatus chinga



Guanaco
Lama guanicoe





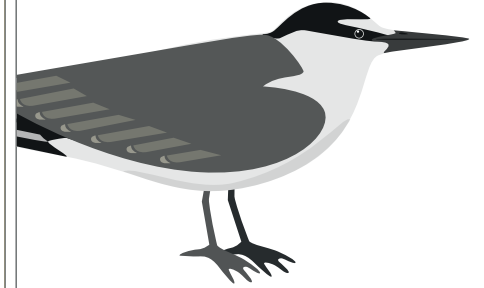
Pato Jergón Grande
Anas georgica



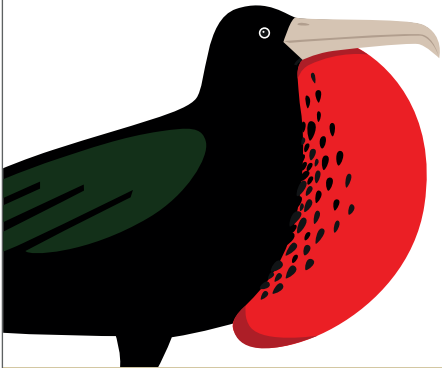
Sietecolores
Tachuris rubrigastra



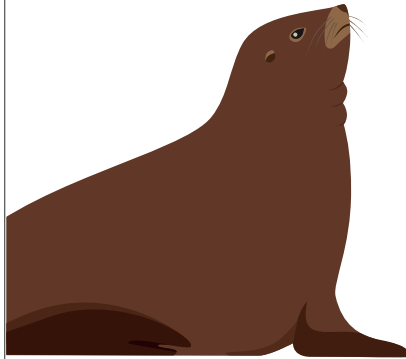
Loica
Leistes Loyca



Manu-tara
Onychoprion lunatus



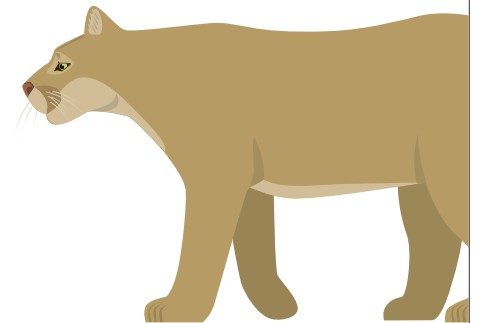
Fragata
Fragata minor



Lobo marino
Otaria flavescens



Murciélago
oreja de ratón
Myotis chiloensis

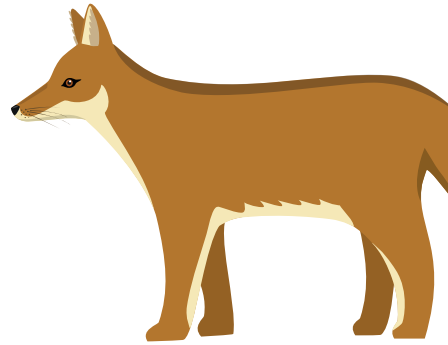


Puma
Puma Concolor

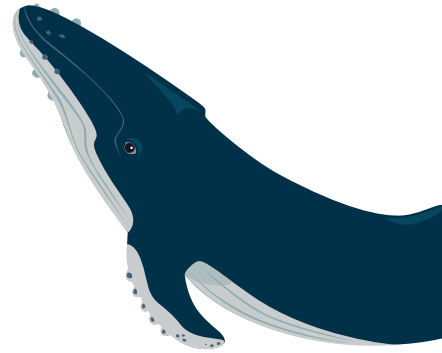




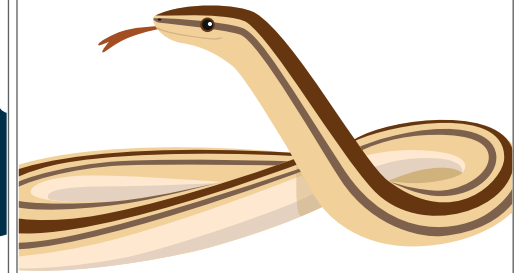
Cururo
Spalacopus cyanus



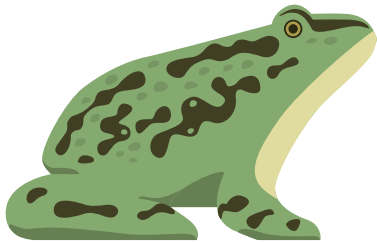
Zorro culpeo
Lycalopex culpaeus



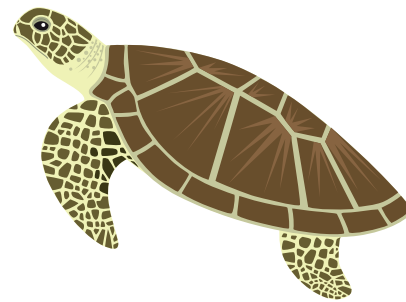
Ballena Jorobada
Megaptera novaeangliae



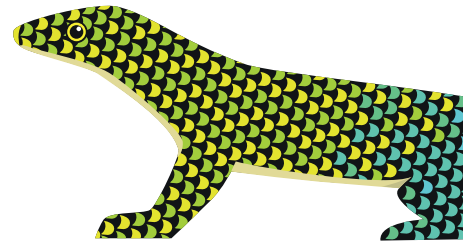
Culebra de cola larga
Philodryas chamissonis



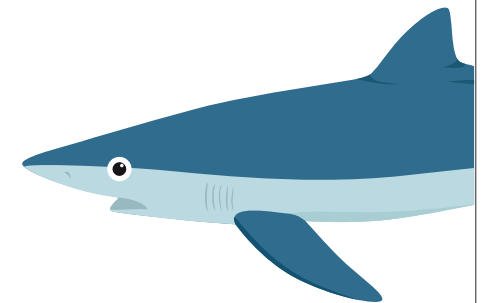
Sapo de rulo
Rhinella arunco



Tortuga verde
Chelonia mydas

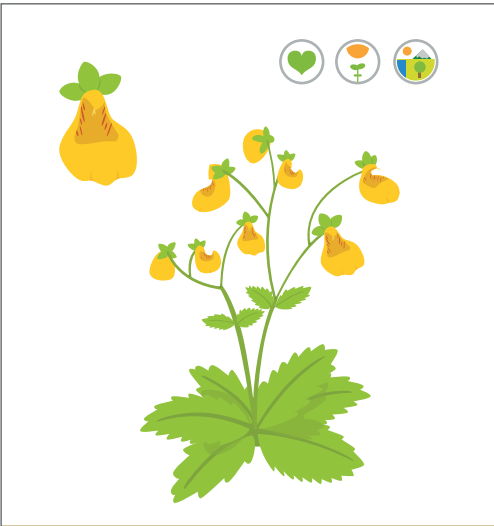


Lagartija esbelta
Liolaemus tenuis

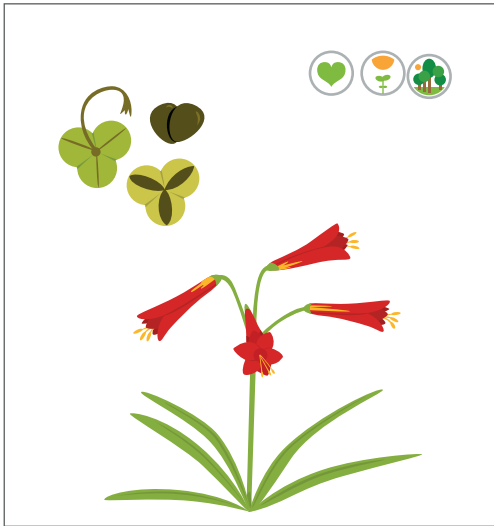


Tiburón azulejo
Prionace glauca





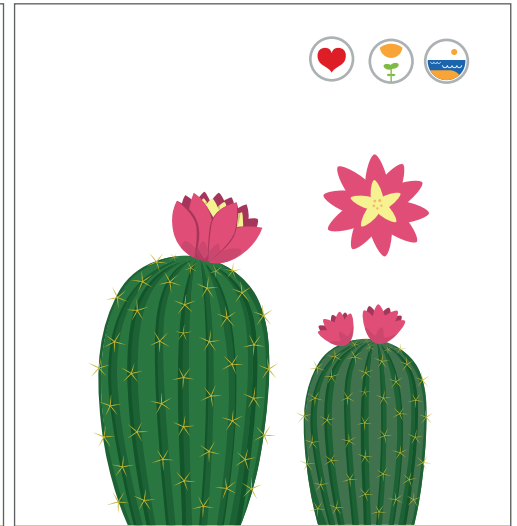
Capachito
Calceolaria corymbosa



Añañuca de fuego
Phycella cyrtanthoides



Matico
Buddleja globosa



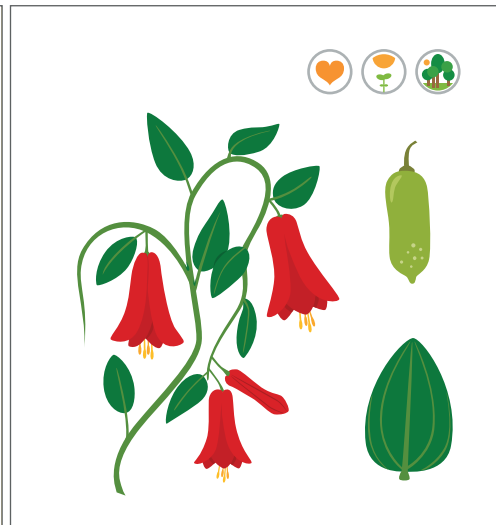
Chilenito
Eriosyce chilensis



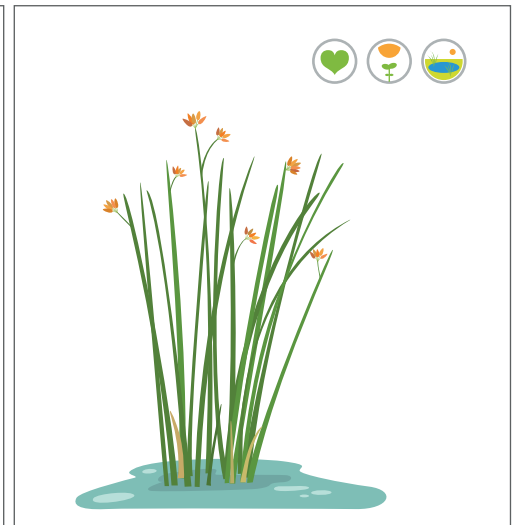
Alstroemeria
Alstroemeria pulchra



Azulillo
Paspheca caerulea

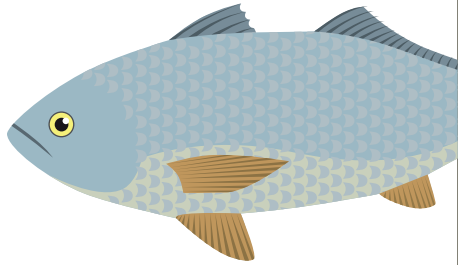


Copihue
Lapageria rosea

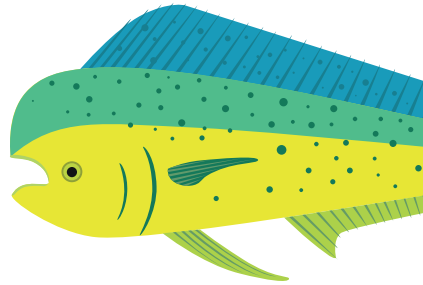


Totora
Schoenoplectus californicus

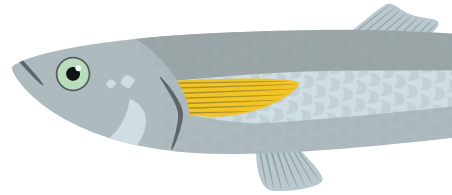




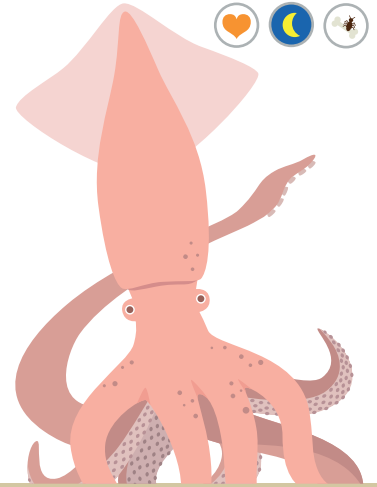
Corvina
Cilus Gilberti



Mahi Mahi
Coryphaena hippurus



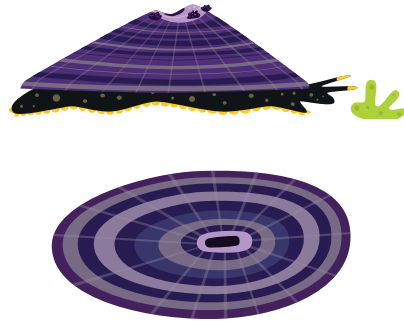
Pejerrey
Basilichthys australis



Calamar de Humboldt
Dosidicus gigas



Jaiba Marmola
Metacarcinus edwardsii



Lapa negra
Fissurella latimarginata

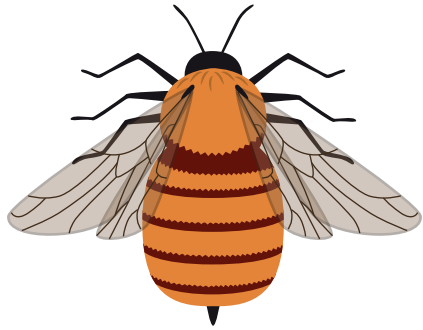


Estrella de mar
Stichaster striatus

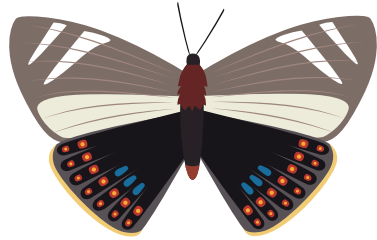


Pololo
Astylus trifasciatus

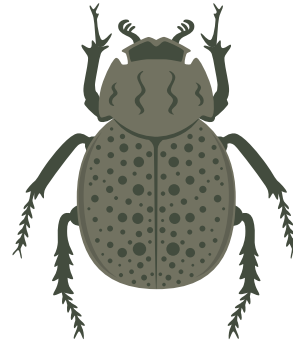




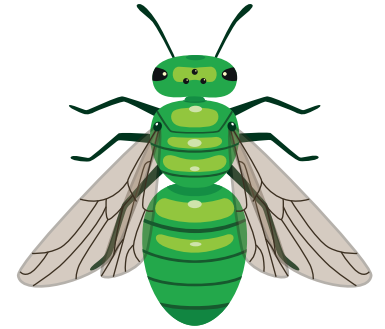
Abejorro chileno
Bombus dahlbomii



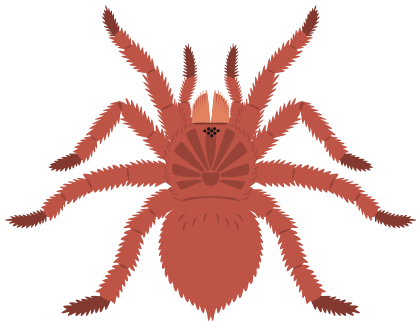
Mariposa
del chagual
Castnia eudesmia



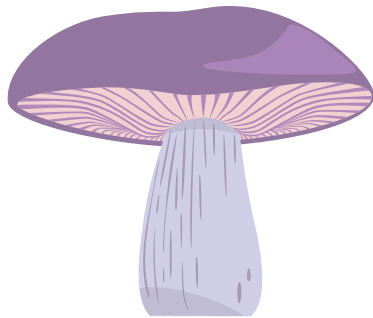
Escarabajo carroñero
Polynoncus bullatus



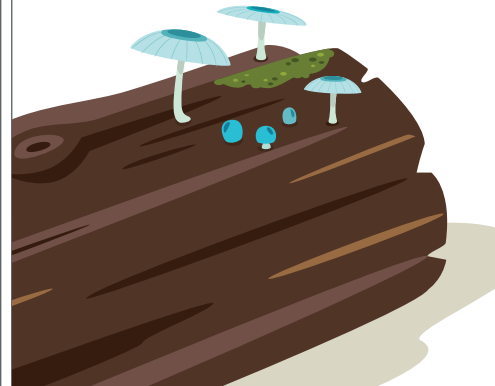
Abeja Joya
Callistochlora chloris



Araña pollito
Grammostola rosea



Pie azul
Lepista nuda

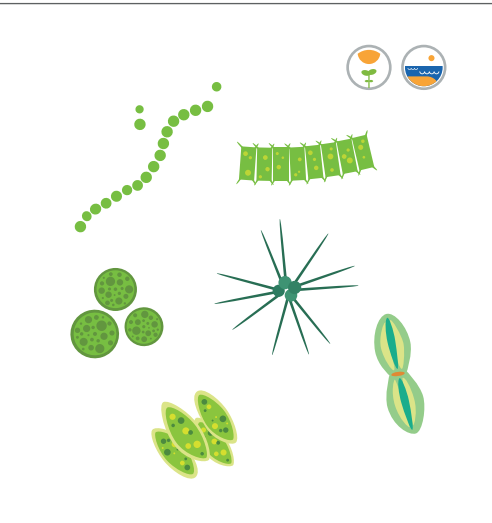


Hongo azul
Mycena cyanocephala

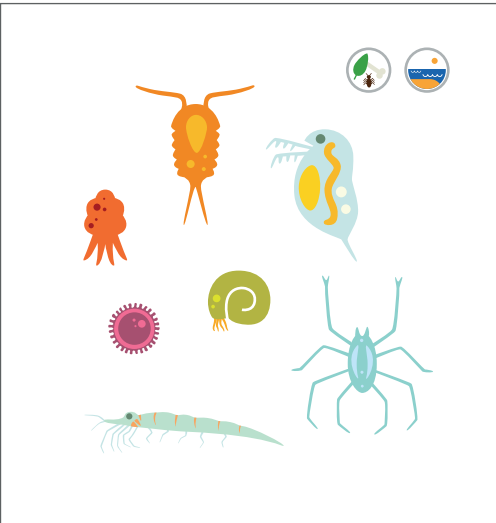


Morilla
Morchella rufobrunnea





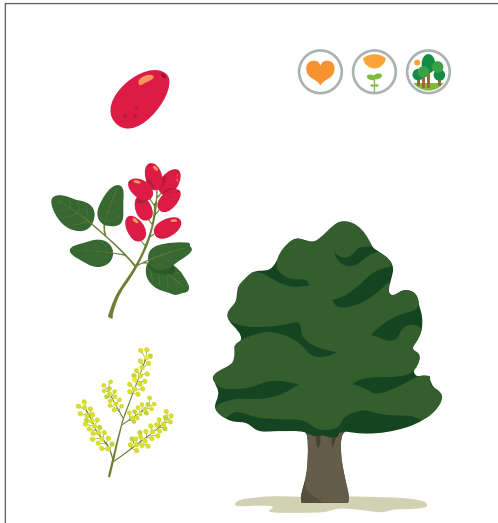
Fitoplancton



Zooplancton



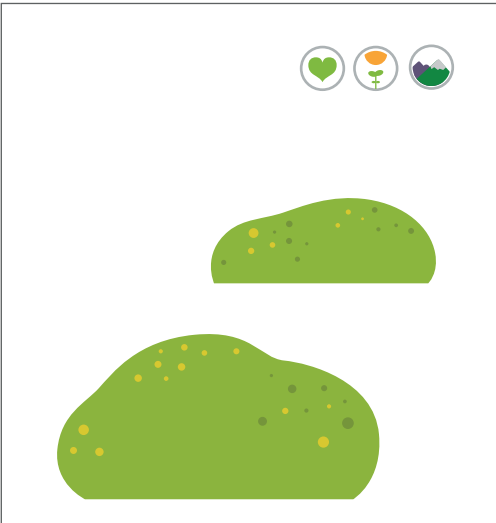
Huiro
Macrocystis pyrifera



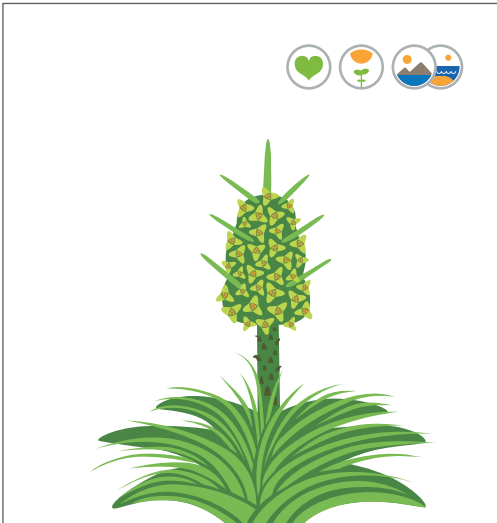
Peumo
Cryptocarya alba



Quillay
Quillaja saponaria



Llaretilla
Laretia acaulis

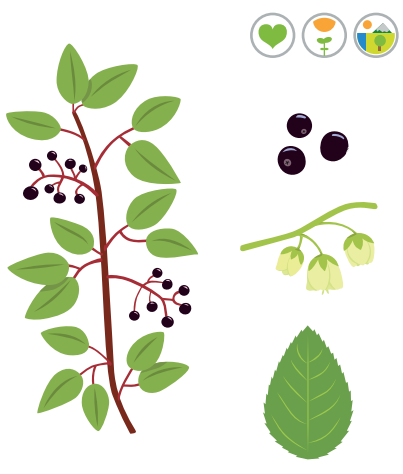


Chagual
Puya chilensis





Palma chilena
Jubaea chilensis





Maqui
Aristotelia chilensis



Espino
Vachellia caven



ALIMENTACIÓN

-  Vegetal
-  Animal
-  Omnívora
-  Fotosíntesis
-  Materia Orgánica

CONSERVACIÓN

-  Datos insuficientes
-  Preocupación Menor
-  Preocupación Mayor
-  Peligro

HABITAT

-  Mar y Costa
-  Pradera y matorral
-  Bosque
-  Cordillera de la costa
-  Todo el territorio
-  Cordillera de los Andes
-  Humedal

VIGILIA

-  Diurno
-  Nocturno

